

GROUNDWORK CUSTOMERS



GroundWork Monitor is the most scalable open source IT monitoring solution for companies with heterogeneous operating systems, application and hardware environments, who want to reduce ongoing monitoring costs, consolidate views and reports and improve staff productivity.

ADVANTAGES

- **SCALABLE:** Cost effective monitoring from tens to tens of thousands of servers and devices.
- **EXTENSIBLE:** Architected to integrate with the rest of your data center, as it amalgamates best-of-breed monitoring tools.
- **COST EFFECTIVE:** Offers enterprise-level availability, performance, and operational efficiency at a fraction of the cost normally charged by proprietary vendors, without nickel and diming you with agent-based pricing.
- **COMPREHENSIVE:** Centralizes visibility and control of IT service management for system administrators, NOC operators, network engineers and management.
- **EASY TO DEPLOY:** Installed and configured in days not weeks.

GroundWork Monitor is built on an open architecture that delivers enterprise-ready systems and network management more quickly and cost-effectively than expensive, inflexible traditional alternatives. GroundWork Monitor can be seamlessly integrated with the other management tools required to support your operations. GroundWork Open Source offers a wide range of services, training and support designed to get you up and running quickly.

The GroundWork Monitor product family consists of **GroundWork Monitor Community Edition**, **GroundWork Monitor Professional**, and **GroundWork Monitor Enterprise**. These editions share a common code base which allows for simple upgrades.

"After making a significant investment with HP OpenView, we still had to buy a new smart plug in or agent for each item we wanted to monitor. We were looking for a solution that could be easily maintained as our infrastructure grew."

Tim O'Brien,
SVP Operations &
Information Security,
Yodlee

GROUNDWORK MONITOR ENTERPRISE

GROUNDWORK MONITOR PROFESSIONAL

GROUNDWORK MONITOR COMMUNITY EDITION

High capacity for up to tens of thousands of devices
Supports distributed deployments
Support for highly-available, redundant environments

Single server, single location systems management solution
Additional features for NOCs, managers, network engineers, and system administrators
Fully supported, access to comprehensive knowledgebase

Fully functional, high-quality open source monitoring product
Great for single, self-sufficient administrators
Community supported

OVERVIEW

All members of the GroundWork Monitor product family include an integrated, tested and supported stack of open source components creating a robust yet flexible monitoring platform.

GroundWork Monitor Professional and GroundWork Monitor Enterprise are the subscription-based members of the GroundWork Monitor product family. In addition to offering commercial support, Professional and Enterprise subscriptions add additional features to what is available in the Community Edition. The following core features are common to both GroundWork Monitor Professional and GroundWork Monitor Enterprise:

FEATURES

- Supports a wide range of monitored operating systems and devices, including Linux, Unix, Windows, AIX, routers, switches, and more.
- Supports many methods of collecting monitoring data – agentless, agent, snmp traps, system/event logs, active/passive checks.
- Monitoring profiles that encapsulate monitoring best practices for different types of devices and applications.
- Auto-discovery and configuration functionality that utilizes the monitoring profiles to enable rapid set-up and configuration.
- Detailed service level reports, confirming that your systems and network devices are adhering to service and operating level agreements.
- Role-based and custom dashboard creation via the dashboard builder to suit individual preferences or specific user responsibilities.
- Executive dashboards, including read-only versions, for specialized management perspectives.
- Advanced reporting of common operational and strategic reports including service levels, availability, performance, and log analysis.
- Ability to extend included reports or create custom reports using BIRT report designer.

- High volume monitoring event console, with search and filtering functions, to cut through large amounts of data and provide focus on the small number that demand immediate attention.
- GroundWork Actions API, which links the Groundwork console to external systems, such as trouble-ticketing and enterprise run-books, allowing immediate action to be taken in response to events.
- Sophisticated alerts and notifications, with escalation rules, de-duplication, and dependency mappings, warning of breached thresholds and pinpointing of trouble spots. Automatic preprocessing reduces false positives while ensuring actual outages are reliably reported.

GROUNDWORK MONITOR PROFESSIONAL

Optimized for a single-site or department-level monitoring deployment, GroundWork Monitor Professional is designed to provide a comprehensive, supported solution that satisfies the monitoring, alerting and reporting needs of the organization, from system administrator to executive.

GroundWork Monitor Professional is upgradable to the Enterprise product at any time, providing access to the practically unlimited scalability, fault tolerance, and integration interfaces needed for complex environments.

GROUNDWORK MONITOR ENTERPRISE

GroundWork Monitor Enterprise expands upon GroundWork Monitor Professional via a modular design that delivers a highly scalable monitoring platform for complex, large and distributed environments. GroundWork Monitor Enterprise enables higher performance and scalability that can:

- Implement distributed monitored topologies
- Actively monitor and visualize network status
- Deliver fault resilience

GroundWork Monitor Enterprise can serve as your only management system or serve as part of an integrated solution for IT service management with a selection of vendors. An Enterprise deployment may integrate the outputs of multiple third party monitoring tools or be easily configured to report its results into other consoles.

FEATURES

- Supports distributed configurations to meet geographical, organizational and increased scalability needs.
- Proven to monitor tens of thousands of devices centrally configured with an aggregated, consolidated view.
- Greater throughput when coupled with GroundWork Monitor's Child Servers and Distributed Monitoring Agents.

NETWORK MANAGEMENT OPTIONS

GroundWork Monitor Enterprise can be configured with optional modules that let you monitor network traffic from topological views of your network.

Network Discovery Module

- Automatically discovers network topology and configurations for network devices and servers.
- Discovered devices are configured using the GroundWork Monitor Auto Configuration tools.
- Notifies when a new network device is discovered or an existing device fails to be discovered when expected.

Traffic Graphing Module

- Polls device interface ports on the network, including WAN edge routers, for network activity.
- Graphs network traffic with multiple display options using either included or custom templates.
- Notifies if network traffic thresholds are violated.

Protocol Analysis Module

- Provides network protocol traffic usage tracking and analysis.
- Identify the OS and identity of nodes and users.
- Collects Netflow/sFlow data from routers or switches.

Network Map Module

- Displays utilization and status of network, including LAN and WAN connections.
- Drill-down to local traffic details for individual network segments.

DISTRIBUTED OPTIONS

GroundWork Monitor Enterprise's distributed options add versatility and comprehensive coverage typically associated with monolithic and expensive proprietary monitoring products.

Standby Server

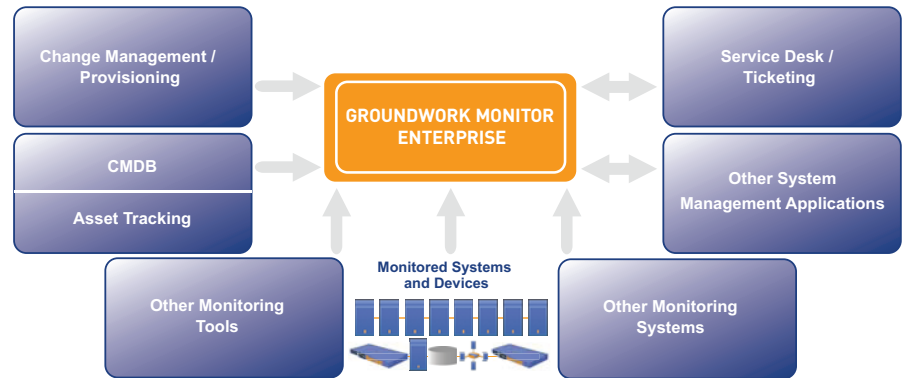
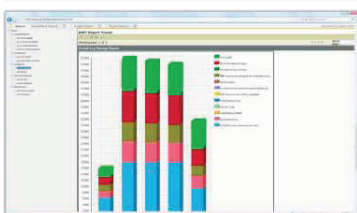
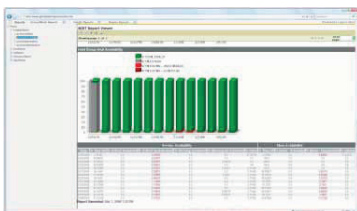
- Provides active-passive failover capabilities to GroundWork Monitor Enterprise.
- Gracefully returns control to the Primary server when it returns to normal operations.

Distributed Monitoring Agents

- Ideal for independent remote locations.
- Great for locations with intermittent or low bandwidth connections.

Child Servers

- Provides detailed information on the status of the remote location.
- Can be deployed on either Linux or Windows environments.



DATACENTER INTEGRATION.

GroundWork Monitor fulfills the monitoring and event management needs of your enterprise environment and can preserve your existing investments by interfacing with what you already have to create an integrated solution.

GroundWork Monitor's extensible, open source architecture allows for integration with other critical components of the enterprise datacenter ecosystem, such as CMDBs, asset tracking systems, help desk applications, optional third party consoles, and third party monitors. GroundWork Monitor collects and manages data via secure web services for use in customer portals, enterprise reporting tools, and other applications. Some examples of GroundWork's successfully deployed integrations include:

HELP DESK / TICKETING SYSTEM INTEGRATION

GroundWork Monitor allows for bi-directional integration with external help desk or trouble ticketing systems, such as Remedy or Magic, enabling trouble ticket creation direct from the GroundWork Monitor Console in response to an event.

OPTIONAL THIRD PARTY CONSOLE INTEGRATION

While GroundWork Monitor Professional and Enterprise include role-based dashboards and consoles, you may also wish to use an optional third party console to display information if your existing processes are heavily linked it. For these scenarios, GroundWork Monitor can provide information to external consoles via automatic data feeds.

ASSET MANAGEMENT / CMDB INTEGRATION

Adds, changes, and deletes to monitored elements can easily be imported through a standard API from external CMDB systems.

THIRD PARTY MONITOR INTEGRATION

In addition to shipping with a wide assortment of open source monitoring tools, GroundWork Monitor can also collect data from proprietary or legacy monitors that you may wish to continue using, allowing for a single, consolidated view across all your systems and devices.

GROUNDWORK MONITOR COMMUNITY EDITION

GroundWork Monitor Community Edition combines the capabilities of dozens of open source projects including Nagios®, RRDtool, SNMPtt, SyslogNG and nmap, into a unified package providing expansive monitoring functionality: from generating and aggregating status information, events and performance data, to graphing and reports. It evaluates the status, events and performance of monitored devices and presents these results in an easy to use web application. This open source project is available under GPL v2.

GroundWork Monitor Community Edition provides the essential functions to monitor unlimited number of devices from a single server, dependent upon your environment and system management needs.

It is a great open source solution for IT shops that use several open source monitoring packages that they want to consolidate into a single monitoring solution. The Community Edition is also appropriate for those with in-house expertise to oversee their own initial deployment, configuration, and ongoing maintenance.

DOWNLOAD

<http://www.groundworkopensource.com/community/>

CORPORATE HEADQUARTERS

139 Townsend Street, Suite 100
 San Francisco, CA 94107
 Toll-free: (866) 899-4342
 Tel: (415) 992-4500
 Fax: (415) 947-0684
info@groundworkopensource.com
www.groundworkopensource.com

Reseller The Netherlands:



ITisit b.v.

Visiting Address: Darnzigt 14
 3454 PS De Meern
 The Netherlands
 Mailing Address: P.O. Box 172
 3454 ZK De Meern
 The Netherlands

Telephone +31 (30) 2404930
 Telefax +31 (30) 2404931
 Helpdesk +31 (30) 2404949
 Email info@itisit.nl
 URL www.itisit.nl

	GROUNDWORK MONITOR COMMUNITY EDITION	GROUNDWORK MONITOR PROFESSIONAL	GROUNDWORK MONITOR ENTERPRISE
--	--------------------------------------	---------------------------------	-------------------------------

Features

Availability Monitoring	✓	✓	✓
Unlimited use Open Source Agents	✓	✓	✓
Monitor servers, devices and applications	✓	✓	✓
Performance monitoring and graphing	✓	✓	✓
Agent-based or agent-less monitoring	✓	✓	✓
Basic auto discovery and configuration	✓	✓	✓
Application and device discovery and configuration		✓	✓
Best Practice monitoring 'profiles' included with unlimited use license		✓	✓
SNMP trap, Syslog and WMI event processing, & correlation		✓	✓
Reporting and exception analysis		✓	✓
Event Console with consolidated view of plugin events, SNMP traps, Syslogs, and WMI events		✓	✓
Dashboards with role-based access		✓	✓
Dashboard builder		✓	✓
SLA Reports		✓	✓
Unlimited number of monitored devices	✓	✓	✓
Notification email, custom script	✓	✓	✓
Notification via SendPage, RSS, IM		✓	✓
False alarm suppression	✓	✓	✓
Automatic alert and notification escalation	✓	✓	✓
Downtime scheduling with alarm suppression	✓	✓	✓

NETWORK MANAGEMENT OPTIONS

Advanced network topology discovery (optional)			○
Network traffic graphing (optional)			○
Network Protocol analysis (optional)			○
Network mapping and virtualization (optional)			○

DISTRIBUTED OPTIONS

Standby server, for mission critical environments (optional)			○
Linux child server, for distributed Unix & Linux environments (optional)			○
Windows child server, for agentless Windows monitoring (optional)			○
Distributed monitoring agents, for remote 'nix monitoring (optional)			○

SUPPORT & SERVICES

Free support incident	✓		
Community-based support	✓	✓	✓
Upgrade assurance		✓	✓
Email support		✓	✓
GroundWork Connect knowledge-base		✓	✓
8 x 5 standard phone support		✓	✓
24 x 7 premier support option (optional)		○	○
System administrator training (optional)		○	○
Deployment options and services (optional)		○	○
Enterprise deployment assessment (optional)			○

○ Optional add-on purchase

SUPPORT & SERVICES

GroundWork Monitor Professional and Enterprise customers have access to resources designed to get GroundWork Monitor up and running quickly, provide monitoring profiles for the latest devices, and tools to expand deployments with ease.

For more information on GroundWork's range of support, professional services, and training offerings, see:

<http://www.groundworkopensource.com/community/>
<http://www.groundworkopensource.com/services/>